



2017
VILNIUS

WORLD MTB ORIENTEERING CHAMPIONSHIPS

JUNIOR WORLD MTB ORIENTEERING CHAMPIONSHIPS



MTBO
RENGINIAI



Bulletin 1

Vilnius, Lithuania
19-27 August 2017

WELCOME

The Lithuanian orienteering federation is pleased to welcome the participants to the World Mountain Bike Orienteering Championships and Junior World Mountain Bike Orienteering Championships from 19 to 27 August 2017 in Vilnius, the capital city of Lithuania.

ORGANISERS

IOF Lithuanian Orienteering federation
City of Vilnius
MTBO RENGINIAI

OFFICIALS

Event director: Roma Puišienė
Technical Director: Jurgis Rubaževičius

ADVISERS

Senior Event Adviser: Ursula Häusermann
(SUI)

EVENT CENTRE

Vilnius is the capital of Lithuania, and its largest city, with a population of about 550 000. It is situated in southeastern Lithuania at the confluence of the Neris and Vilnia rivers, close to a site claimed to be the Geographical Centre of Europe.

Vilnius is a cosmopolitan city with diverse architecture, however most known is the Vilnius Old Town, the historical centre of Vilnius, which is one of the largest in Europe (3.6 km²) and listed as UNESCO World Heritage.

Today Vilnius is the most alive city in Lithuania, full of cultural and night life, festivals and events. In 2009 Vilnius was buzzing with cultural activities as European Capital of Culture.

Vilnius is an ideal city to host world-class orienteering competitions: It is surrounded by beautiful forests and all five competitions will be held inside the city boundaries, creating an unforgettable orienteering experience for the participants, as well as a unique entertainment opportunity for spectators.



PROGRAM OVERVIEW

August 19 (Saturday)	Arrivals, training
August 20 (Sunday)	Model event, opening ceremony
August 21 (Monday)	Mass start (official or unofficial)
August 22 (Tuesday)	Middle distance
August 23 (Wednesday)	Relay
August 24 (Thursday)	Rest day
August 25 (Friday)	Long distance
August 26 (Saturday)	Sprint
August 27 (Sunday)	Departure

TRAINING OPPORTUNITIES

The calendar of national Lithuanian MTBO events can be found at <http://www.losf.lt/Varzybos>

The Organizers are also happy to provide maps and help with organizing trainings upon request (info@mtbo.lt).

TRAINING CAMPS

An official training camp will be organized in spring and summer 2017. Details will be published in Bulletin 2.

CLASSES AND PARTICIPATION RESTRICTIONS

WMTBOC

There is one class for women (W21) and one for men (M21). There are no age restrictions. Each Federation may enter a team of up to 16 competitors - up to 8 women and 8 men - and an unlimited number of team officials. In each individual race, except the Long distance competition, every Federation may enter up to 6 women and 6 men. In addition, the current World Champions for the distance may be entered by their Federations, provided they are members of the Federation's team.

For the Long distance competition, the number of competitors who may enter is limited. The qualification rules are published as Special Rules decided by the IOF Council and published at the latest by 31 January 2017.

In the Relay, each Federation may enter up to 2 women's teams and 2 men's team, each consisting of 3 team members. Incomplete teams and teams with cyclists from more than one Federation are not allowed.

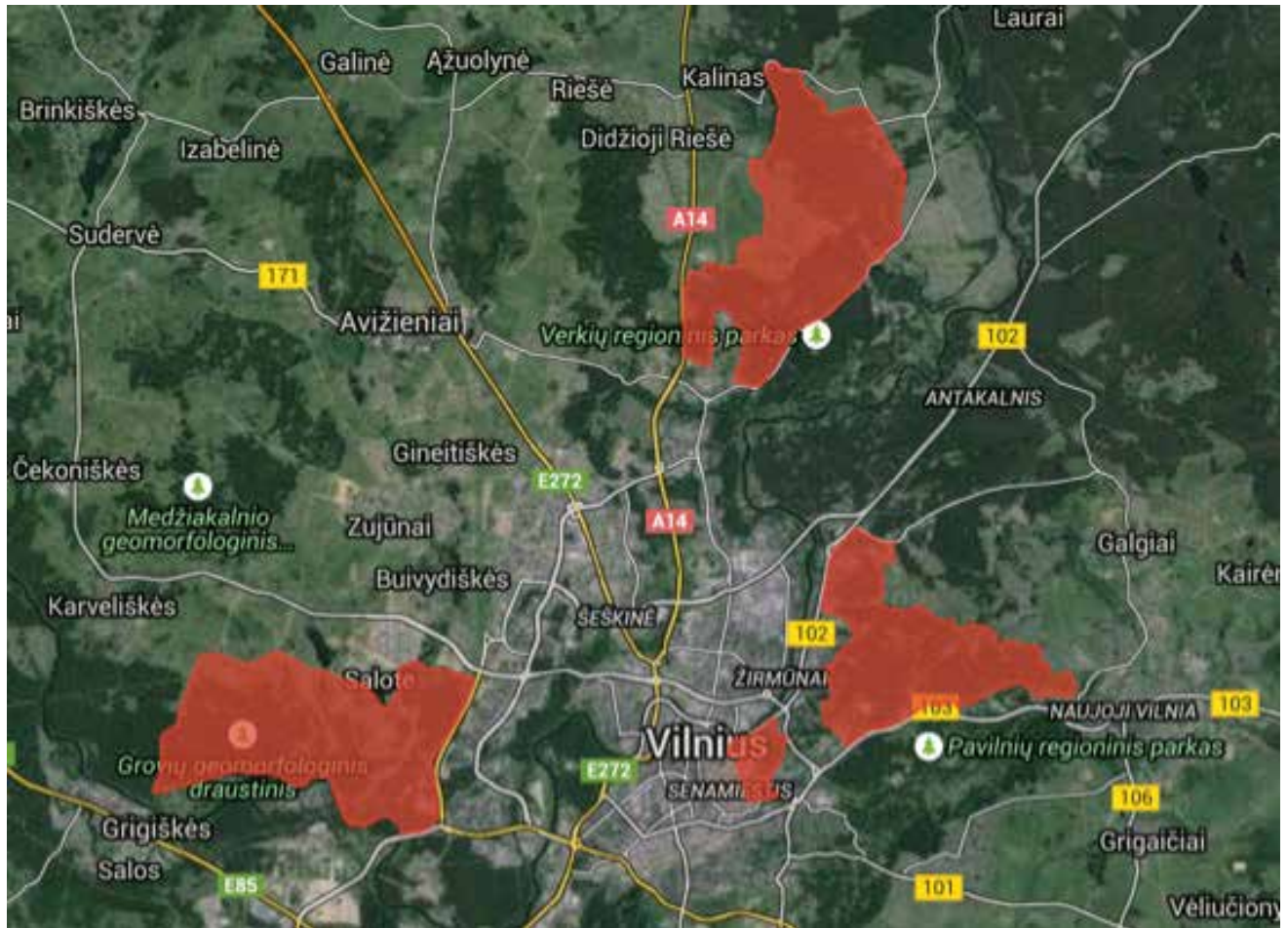
JWMTBOC

There is one class for women (W20) and one for men (M20). Only competitors who are entitled to compete in these classes (W20 or M20) may participate.

Each Federation may enter a team of up to 12 competitors - up to 6 women and 6 men - and a number of team officials. In each individual competition every Federation may enter up to 6 women and 6 men.

In the Relay, each Federation may enter up to 2 women's teams and 2 men's teams, each consisting of 3 team members. Incomplete teams and teams with cyclists from more than one Federation are not allowed.

EMBARGOED AREAS



The areas marked on the map above are embargoed for all orienteering activities, unless specifically permitted by the organizer. The embargoed areas are out of bounds for all potential participants and team members, including competitors, team leaders, coaches, doctors, escorts, and any other person with potential connection to a team (athletes or others). This means that no orienteering activity or training sessions may take place in these areas and that they may not be visited with or without a map.

The marked area in the city of Vilnius (see enlarged map below) is restricted for any orienteering or MTBO activity. You can visit the area on foot or by car, but it is strictly forbidden to ride a bike.



MAPS

The most recent versions of previous orienteering maps of the competition terrains are accessible on the organizer's web page www.mtbo.lt.

INFORMATION AND CONTACT

Roma Puišienė: +370 670 99997
Email: info@mtbo.lt

Web page: www.mtbo.lt
Facebook: <https://www.facebook.com/wmtboc>