

ROLL CALL

1

	Australia		Latvia
	Austria		Lithuania
	Bulgaria		Poland
	Czech Republic		Portugal
	Denmark		Russian Federation
	Estonia		Slovakia
	Finland		Spain
	France		Sweden
	Germany		Switzerland
	Great Britain		Turkey
	Italy		Ukraine
	Japan		United States

MASS START

GUDELIAI, 2017 August 22



Time schedule

10

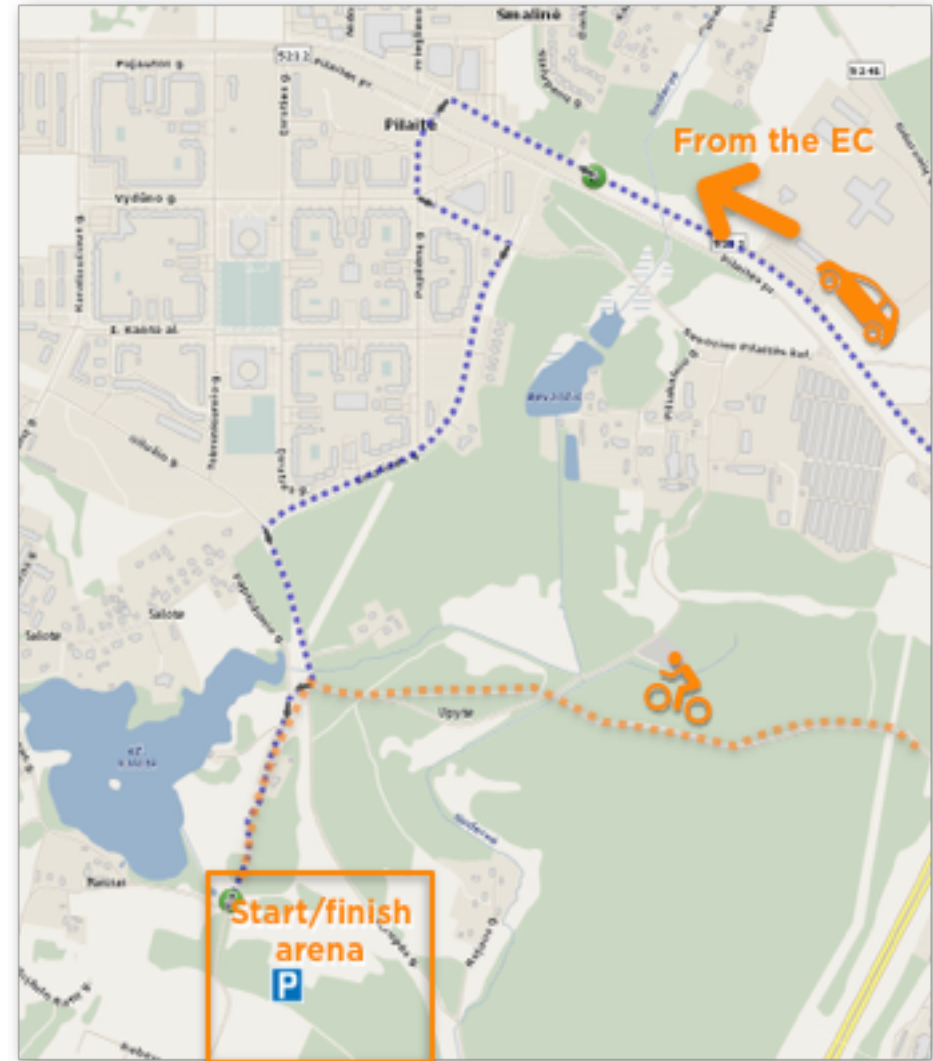
9:30	M20 Start
9:40	W20 Start
10:20	MEN Start
10:30	WOMEN Start
10:30	GPS Maps ON
10:30	Finish quarantine ends
12:30	General deadline for complains
13:00	Prize giving ceremony at Finish Arena

9:00 - 13:30	Office opening hours (at the competition arena)
17:30 - 20:00	Office opening hours (at the event centre - EC)
13:00	Deadline for start group allocation for the RELAY teams at the event office (Finish Arena)
18:00	Team leaders meeting at the EC

Distance from Event center to
Middle competition arena is
6,5 km (18 min) by car
5,5 km (20 min) by bike

Parking is on the site (on the
grass).

Do not park on the Gravel road!



Event arena

12

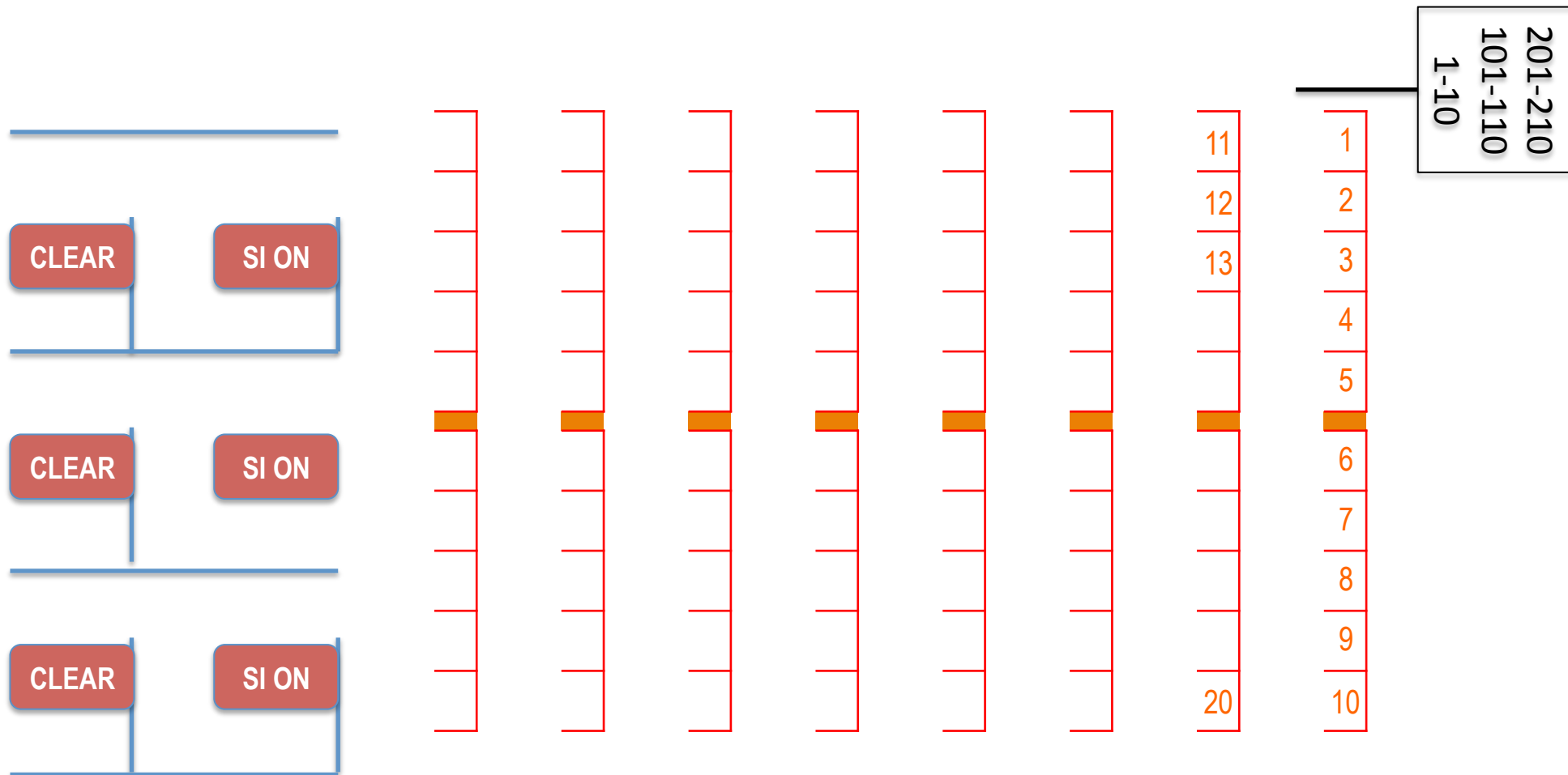


Start Order

14

Mass start organised in four stages, one for each category.

There will be grid drawn on the grass, for easier start position:



Red Group will start from the first row, orange from the Second.
Late starters start in the next row, early starters – from the last.

After the start the competitors have to follow a mandatory route (marked by red stripes) to the start point marked by a standard CP flag in the terrain.

BIB numbers – one on the bike, one on the back of the rider.
No visible BIB's – No start.



MIDDLE	Length, km (optimal route)	Number of CP	Climb, m	Estimated winning time
MEN	27,9	43	540	75-85
WOMEN	22,4	41	430	75-85
M20	25,3	38	470	60-68
W20	20,6	36	380	60-68

Time limit: 180 minutes

Map scale: 1:10 000, contours 5m and 1:5 000. contours 2,5m

Waterproof synthetic paper

Map size: 4 pcs. 23x 33 cm (A4+) + 1 pcs. 33 x 42 cm (A3+)

Multiple map change

On start each class Athletes receive set of four A4+ size single sided and numbered maps.

Control numbers are in continuous order.

Last control on the previous map is represented as Start triangle in the following map. Exception – from map 2 to map 3 there will be a marked mandatory route.

For all classes the last map will be available at map change point on the terrain (Last control on map #4).



Finish Quarantine Zone

19

Opens 9:30 - Ends - 10:30

It is for early arrivals or very very fast M20 riders.

Those not finishing the distance MUST pass the finish gate to the finish quarantine



Special attention

Local traffic on the roads

Erosion on gravel roads



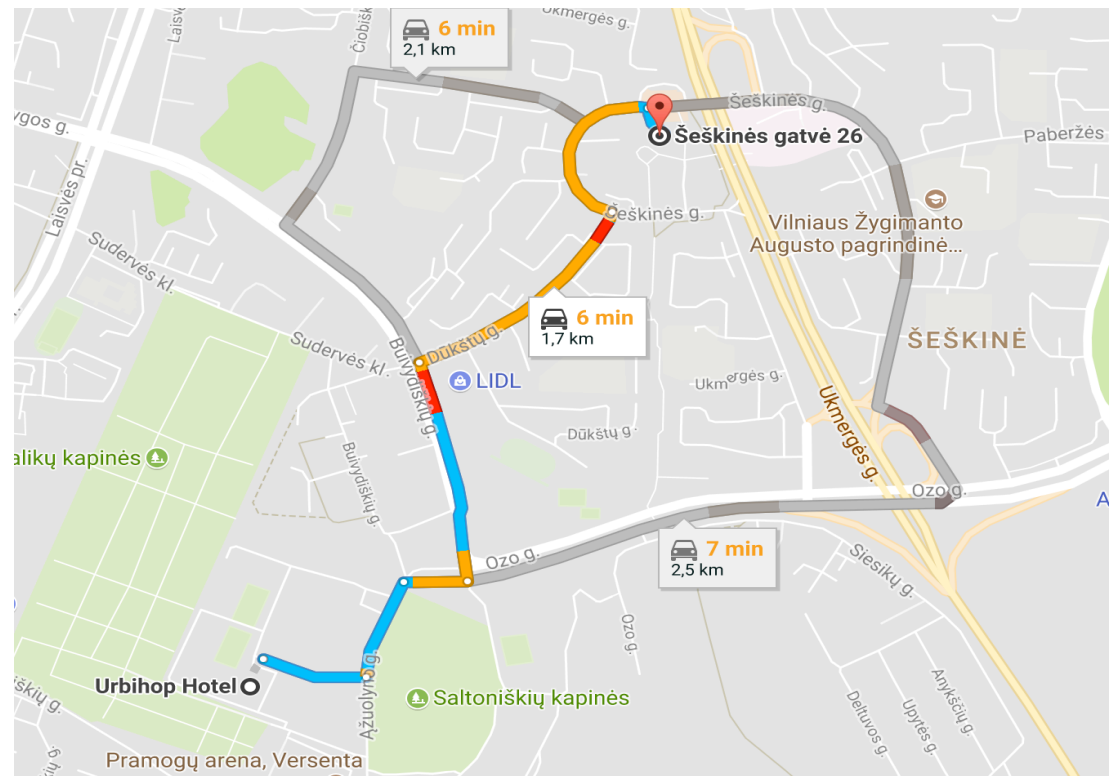
Deadline to hand in forms for Relay teams – **13:00**

Catering at the Hotel

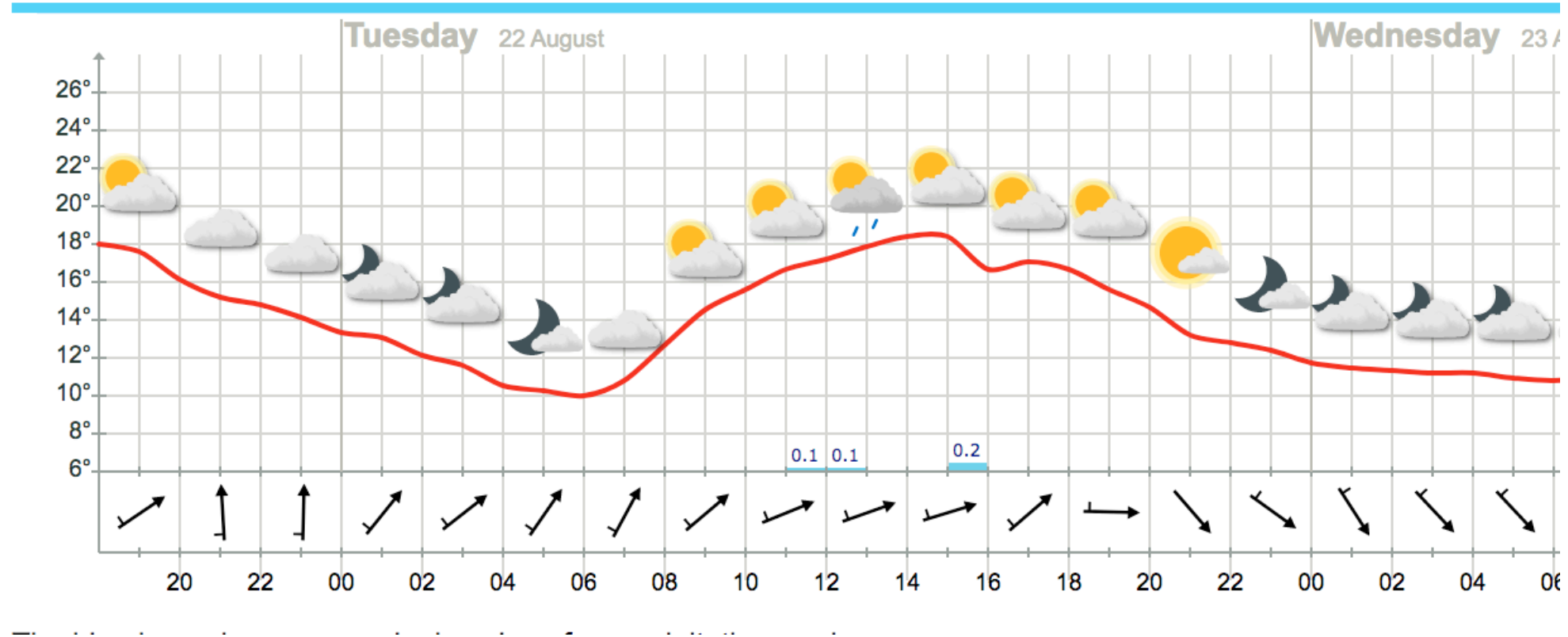
Hot food and breakfast will start at **6:30**.

Self Service Laundry

- Located at Šeškinės g. 26
- 1 eur/kg on base cycle
- Londris app is needed



Meteogram, next 48 hours



Tomorrow Team Officials meeting starts at 18:00 same place.

THANK YOU!

